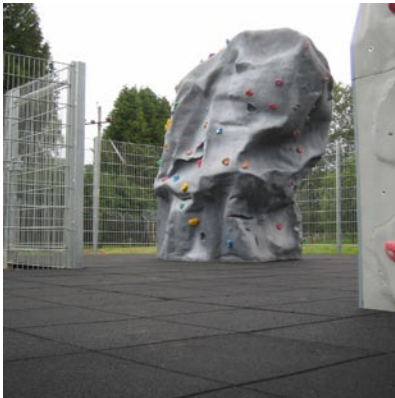


# SAFETY TILES roped climbing



Rubber crumb tile system  
Suitable for indoor or outdoor use

# SAFETY SURFACES signs of quality



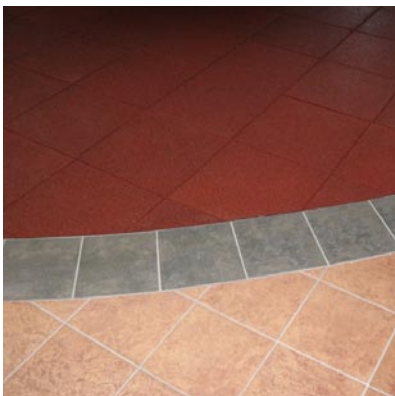
## SAFETY

- Although not a stipulated requirement detailed in the European Standard (EN12572) it is generally accepted within the climbing wall industry that a safety surface should be provided below a climbing wall.
- We adopt elements of the European standard for playground equipment (EN1176). Below roped climbing walls, we recommend 75mm depth matting with a critical fall height of 2.8 metres.



## QUALITIES

- Used below boulders and bouldering walls with a maximum height of 2.8 metres.
- Used below roped facilities that are protected from falls by a rope belay system.
- Suitable for indoor and outdoor locations.
- Exposed edges are ramped to reduce the danger from tripping and to make provision for wheelchair access.



## AESTHETICS

- Black tiles supplied as standard. Other colours available upon request.
- Supplied in metre square tiles that are cut and scribed to fit tight against the profile of any climbing wall.
- Available in a 'wet pour' option with no visible joins. Custom made colour schemes can be incorporated into the matting finish.
- Available in 20mm through to 105mm depth of tile. Specification subject to type of facility.



## DURABILITY

- Individual tiles can be quickly and easily replaced in belay areas and landing zones where there is excessive wear and tear.
- Product guaranteed for two years when coupled to an annual maintenance agreement.
- Easy to keep clean.