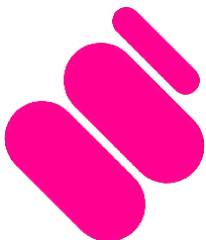


# SAFETY MATTING bouldering



300mm safety matting.  
Premium quality. Specialist installation.

# SAFETY SURFACES signs of quality



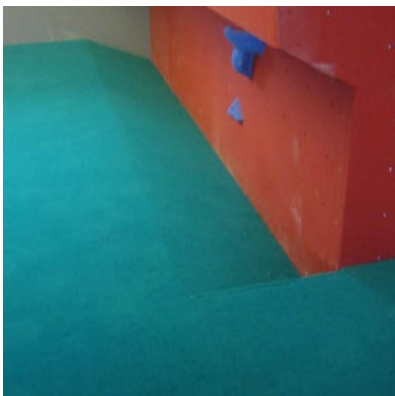
## SAFETY

- Foam safety mats are designed and installed in accordance with the European Standard for Artificial Climbing Structures EN 12572-2.
- A minimum 300mm depth of matting is installed where a maximum climbing height of 4.5 metres is possible.
- Foam safety mats extend at least 2.5 metres from the most overhanging point of the bouldering wall and 1.5 metres to each side.
- All materials used in this product are compliant to relevant Fire Safety Regulations BS5852 Part 2 and BS4790.



## QUALITIES

- Three layer safety matting solution provides a structurally strong yet cushioned fall impact zone.
- Dual density foam topped with a carpet top cover. Each element bonded together with extra strong contact adhesive.
- Foam and carpet joints are staggered to give further rigidity. Weak points are minimised and therefore reduces the chances of excessive wear and tear.
- Continuous and secure connection of safety surface ensures that there are no gaps for climbers to fall between.



## AESTHETICS

- Safety matting is snugly fitted to the exact footprint of the bouldering wall.
- Soft brushed, anti-static carpet top cover.
- Carpet top cover fitted in 2 metre wide sections and linked together with 200mm wide strips of Super Velcro.
- Available in a choice of colours.
- Option to include ramped edges at panel / matting interfaces. Allows low starts to be practiced.



## DURABILITY

- Product guaranteed for two years.
- Heavier density edging foam fitted along exposed matting edges. Creates a firmer step onto the safety matting - reduces soft edges or ruffles created in the carpet.
- Sections of matting can be quickly and cleanly replaced in areas of excessive wear and tear or softening.
- Carpet cover is easily cleaned with a vacuum cleaner. It will not fade over time and is stain resistant.